

GMT5P Fuse Block

Installation Guide

Overview:

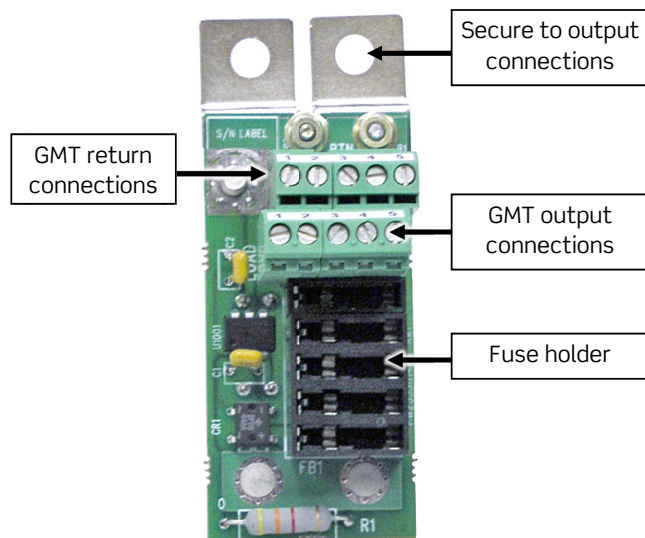
The purpose of this manual is to describe the installation of the Eltek GMT5P Fuse Block in the distribution of an Integrated Power System and BDFB.

Description

This product is designed for use with multiple Eltek products, including Integrated Power System (IPS) front-access distribution and BDFB. It takes 2 circuit breaker positions to provide 5 GMT-style fuse positions. Use GMT fuses up to 15 amps. Fuses are purchased separately.

The kit includes the following:

- Plug in module (GMT5P)
- Wire to connect to return bar (part number 324286 for Integrated Power System; part number CA111002499 for BDFB)
- Hardware kit (MK000000099)



Fuse Block Position	Fuse Configuration Up To ...	Fuse Configuration for LOAD Current	
	6A per fuse	10A per fuse	12A per fuse
1	FUSE	FUSE	FUSE
2	FUSE		
3	FUSE	FUSE	
4	FUSE		FUSE
5	FUSE	FUSE	

NOTE: The entire GMT fuse block is rated for a maximum total current of 30A at 50°C.

Figure 1 - GMT5P fuse block

Required Tools

- 5/16 and 7/16 nut drivers or sockets
- 1/8" flat head screwdriver
- Wire for load connections (24 AWG to 12 AWG)

Installation Guide

Installation

Eltek recommends turning off all power sources (rectifiers, batteries) before installing the GMT5P fuse block; if this is not possible, use insulated tools.

1. Turn power off.
2. Plug module into available breaker slots.
3. Secure the module to the shelf by using the supplied $\frac{1}{4}$ " flat washer and nut onto the breaker output pads shown in Figure 2. Torque to 60 in-lbs.
4. Connect the return wire:
 - For IPS applications, connect the pre-attached cable (324286) to the studs on the return bar above the output connections. Use provided washers and nuts from hardware kit to secure return wire to return bar. Torque to 60 in-lbs.
 - For BDFB applications with Internal Returns, (a.) replace the pre-attached cable (324286) with the (supplied) longer cable (CA111002499); (b.) wrap the return connection wire around the backside of the return bar; (c.) connect to $\frac{1}{4}$ "-20 studs; torque to 60 in-lbs.
 - For BDFB applications with External Returns, remove the pre-attached cable (324286) from the GMT5P, and connect a user-created cable from the external ground to the stud on the GMT5P. For this connection, use an 8-gauge wire to a lug with a #10 hole. Recommend lugs are YA8CL-90 (Burdny) or LCAX8-10F-L (Panduit). Torque, 18 in-lbs max.
5. Connect output and return wires for GMT5P (Figure 1). Torque to 4.5 in-lbs.
6. Turn power back on.
7. When ready to power up the GMT load(s), install GMT fuse(s) into the appropriate slot(s) per table on page 1.

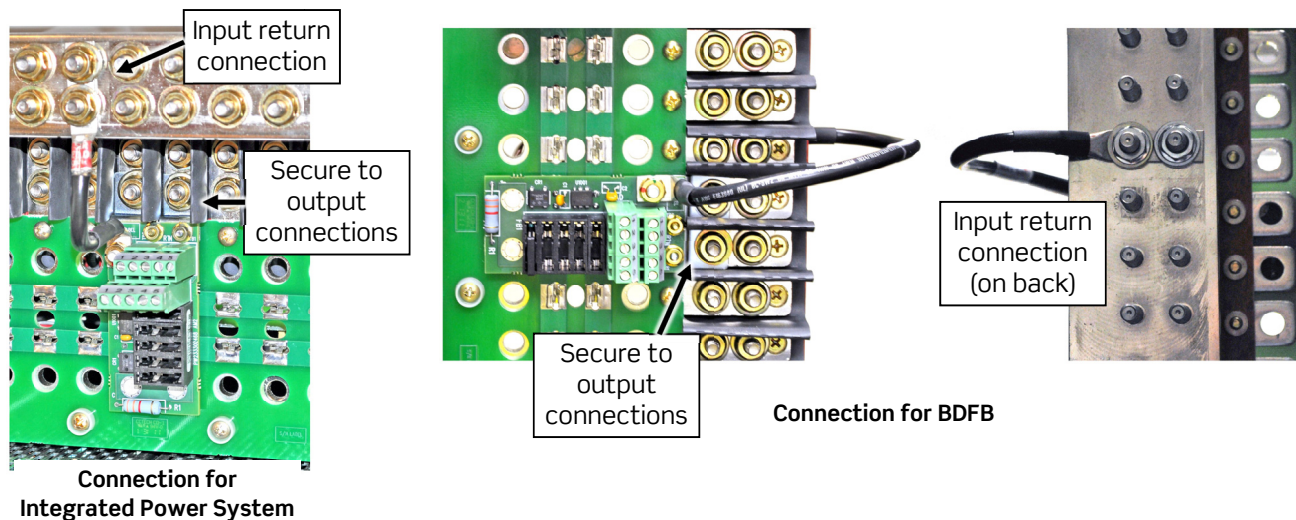


Figure 2 - GMT5P installed in distribution

For questions or additional assistance, please contact Eltek Tech Support at **1-866-240-6614**.